



LANA GROSSA

NUVOLETTA Art. 1154

42 % Alpaka (Baby), Alpaca (Baby)
 42 % Schurwolle (Merino extrafine),
 Virgin Wool (Merino extrafine)
 16 % Polyamid, Polyamide



10 x 50 g



ca. 250 m
per 50 g



4-5



10 x 10 cm



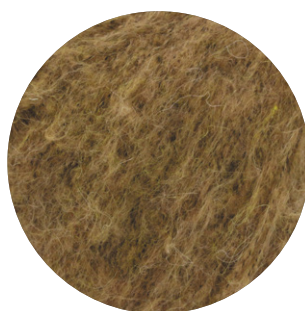
Gr. 38-40
ca. 250-300 g



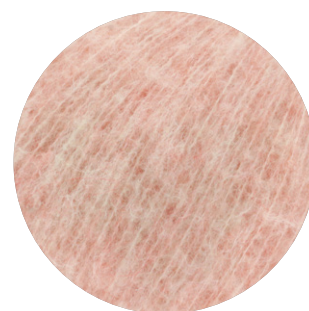
1



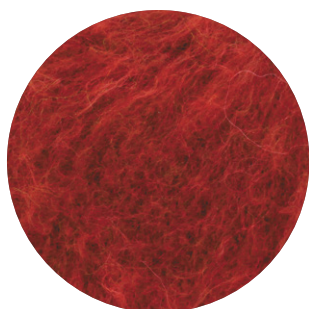
2



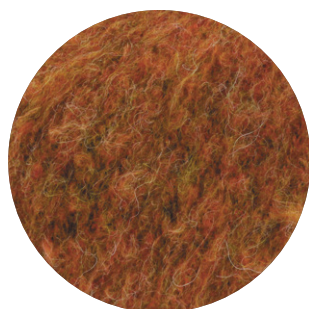
3



4



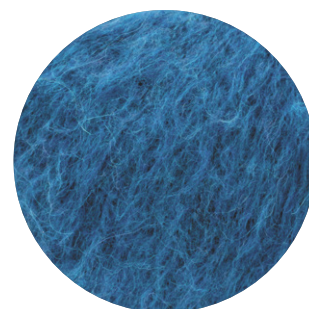
5



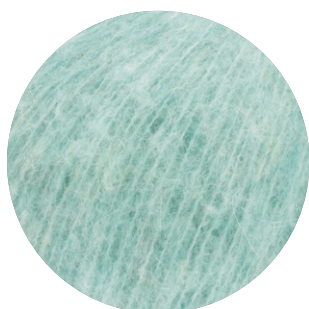
6



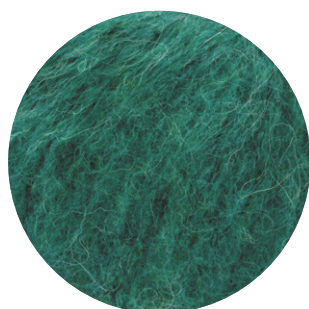
7



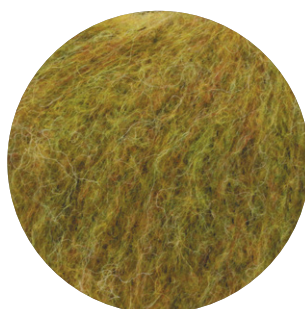
8



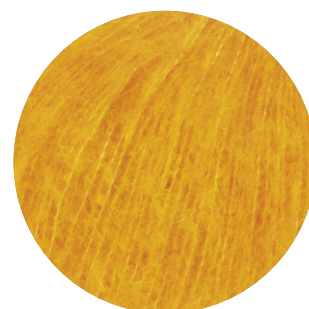
9



10



11



12

LANA GROSSA GmbH

Ingolstädter Straße 86 · 85080 Gaimersheim · Tel. +49 (0)8458 61-0 · Fax +49 (0)8458 61-36 · www.lanagrossa.de



LANA GROSSA

NUVOLETTA Art. 1154

42 % Alpaka (Baby), Alpaca (Baby)
 42 % Schurwolle (Merino extrafine),
 Virgin Wool (Merino extrafine)
 16 % Polyamid, Polyamide



10 x 50 g



ca. 250 m
per 50 g



4-5



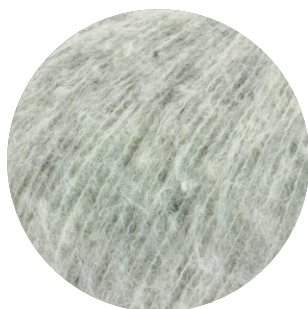
10 x 10 cm



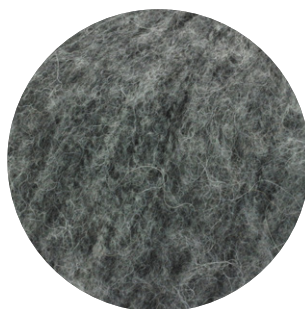
Gr. 38-40
ca. 250-300 g



13



14



15



16

LANA GROSSA GmbH

Ingolstädter Straße 86 · 85080 Gaimersheim · Tel. +49 (0)8458 61-0 · Fax +49 (0)8458 61-36 · www.lanagrossa.de