



LANA GROSSA

lala HARMONY Art. 1563
BERLIN
LANA GROSSA

56 % Alpaka (Baby), Alpaca (Baby)
20 % Baumwolle, Cotton
14 % Polyamid, Polyamide
10 % Schurwolle (Merino), Virgin Wool (Merino)



10 x 50 g

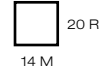


ca. 150 m
per 50 g



5,5-6

10 x 10 cm



Gr. 38-40
ca. 250-300 g



1



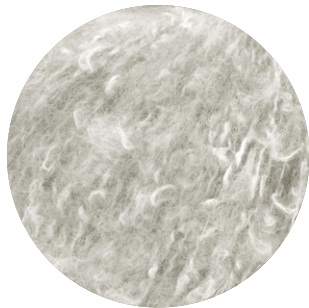
2



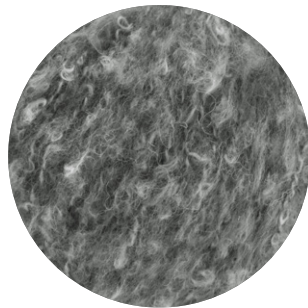
3



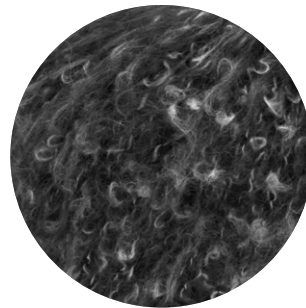
4



5



6



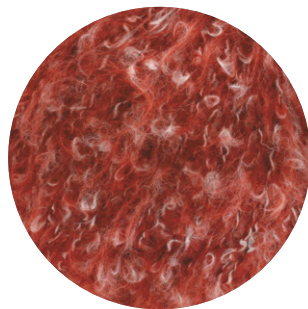
7



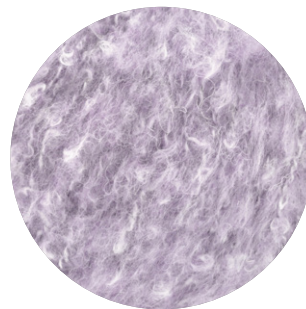
8



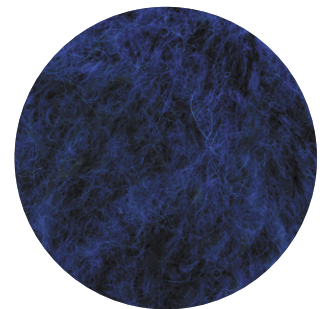
9



10



11



12

LANA GROSSA GmbH

Ingolstädter Straße 86 · 85080 Gaimersheim · Tel. +49 (0)8458 61-0 · Fax +49 (0)8458 61-36 · www.lanagrossa.de